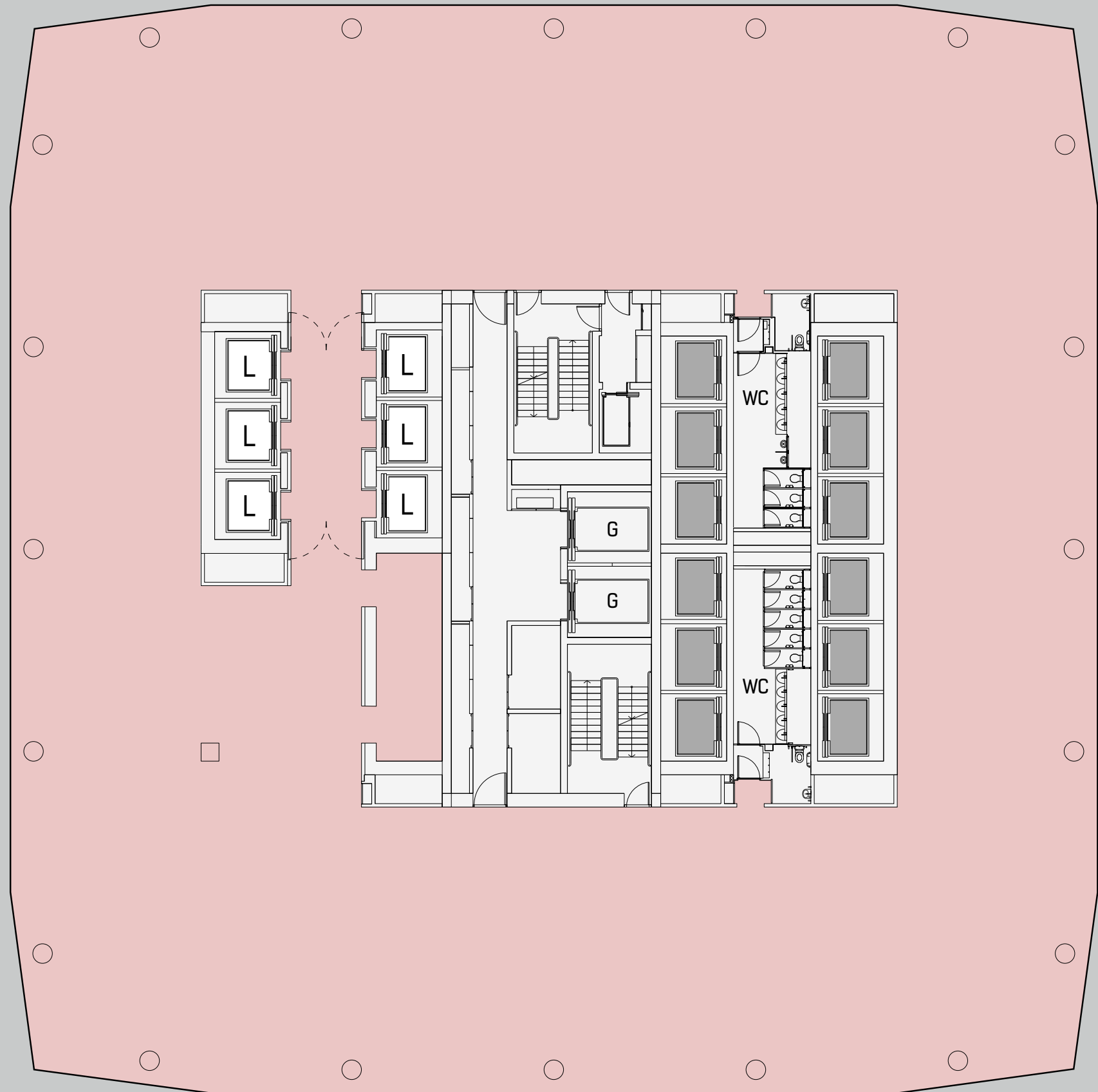


# LOW MID-RISE

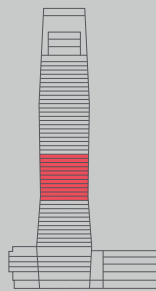
## LEASABLE AREA

OFFICE:

18,877 SQ FT



OFFICE



ICD BROOKFIELD PLACE  
DUBAI

Ben McGregor | +971 50 189 5479  
ben.mcgregor@icd-brookfield.com  
[www.icdbrookfieldplace.com](http://www.icdbrookfieldplace.com)